

Read the spelling words and sentences.**-ance**

1.

2.

3.

4.

5.

6.

7.

8.

9.

10.

11.

-ence

12.

13.

14.

15.

16.

17.

18.

19.

20.

- | | |
|----------------|--------------------|
| 1. performance | <i>performance</i> |
| 2. experience | <i>experience</i> |
| 3. appearance | <i>appearance</i> |
| 4. ambulance | <i>ambulance</i> |
| 5. attendance | <i>attendance</i> |
| 6. excellence | <i>excellence</i> |
| 7. importance | <i>importance</i> |
| 8. obedience | <i>obedience</i> |
| 9. inheritance | <i>inheritance</i> |
| 10. innocence | <i>innocence</i> |
| 11. clearance | <i>clearance</i> |
| 12. insurance | <i>insurance</i> |
| 13. absence | <i>absence</i> |
| 14. balance | <i>balance</i> |
| 15. sequence | <i>sequence</i> |
| 16. distance | <i>distance</i> |
| 17. residence | <i>residence</i> |
| 18. instance | <i>instance</i> |
| 19. silence | <i>silence</i> |
| 20. patience | <i>patience</i> |

Did you like our **performance**?
I had a frightening **experience**.
He disguised his **appearance**.
Call an **ambulance** at once!
He recorded class **attendance**.
She performed with **excellence**.
This clue has great **importance**.
Our parents expect **obedience**.
The house was his **inheritance**.
I will prove my **innocence**.
The bridge has a low **clearance**.
Car **insurance** is expensive.
I am in charge in her **absence**.
He lost his **balance** on the stairs.
Follow the steps in **sequence**.
She ran the **distance** in an hour.
Her legal **residence** is in Utah.
He is excused in this **instance**.
The audience sat in **silence**.
Have **patience** while you wait.

Think & Sort the spelling words.1–11. Write the words that end in the suffix **-ance**.12–20. Write the words that end in the suffix **-ence**.**Remember**

The suffixes **-ance** and **-ence** can be added to base words or root words to form nouns.

**Spelling
Tutor**

Word Meanings

Write spelling words to complete the sentences. Use the underlined words as clues.

1. The goal of _____ is to insure you against major losses.
2. Let's clear out the shelves with a _____ sale.
3. When stars appear in the sky, I welcome their _____.
4. If you are absent, bring a note explaining your _____.
5. Any imbalance will be corrected when you _____ the wheels.
6. The distant city was only a short _____ from the border.
7. A sequential set of directions make the _____ easy to follow.
8. If the injured are not ambulatory, they may need an _____.
9. If you inherit money, taxes will take part of that _____.
10. I am sending my disobedient dog to _____ school.

Identify Homophones

Write the spelling words that are homophones for these words.

- | | |
|----------------|----------------|
| 11. patients | 14. innocents |
| 12. residents | 15. instants |
| 13. attendants | 16. excellents |



Use the
Thesaurus

Check the **Writing Thesaurus** to find a spelling word that is a synonym for the underlined word in each sentence below. Write the spelling word.

17. A paper route provides valuable training.
18. A hush fell over the crowd.
19. The instructor praised the dancer's execution.
20. We all understand the significance of getting to school on time.

Word Meanings

1.

2.

3.

4.

5.

6.

7.

8.

9.

10.

Identify Homophones

11.

12.

13.

14.

15.

16.

Use the Thesaurus

17.

18.

19.

20.

Connections to READING

Complete the Analogies

1.

2.

3.

4.

5.

6.

Make Inferences

7.

8.

9.

10.

11.

12.

13.

Use Context Clues

14.

15.

16.

17.

18.

19.

20.

performance
attendance
inheritance
absence
residenceexperience
excellence
innocence
balance
instanceappearance
importance
clearance
sequence
silenceambulance
obedience
insurance
distance
patience

Complete the Analogies

Write a spelling word to complete each analogy.

1. **Sincerity** is to **honesty** as **stability** is to ____.
2. **Cowardice** is to **courage** as **guilt** is to ____.
3. **Loud** is to **noise** as **quiet** is to ____.
4. **Confidence** is to **certainly** as **image** is to ____.
5. **Perform** is to **performance** as **clear** is to ____.
6. **Disturb** is to **disturbance** as **obey** is to ____.

Make Inferences

Write spelling words to complete this job interview. The first letter of each word is provided.

7. What past e____ qualifies you for this job?
8. Tell me about your previous employment in s____, starting with your first job.
9. Can you explain your a____ from your last job?
10. How far is your current r____ from here?
11. Have you ever driven an a____?
12. Are you comfortable driving a long d____?
13. Describe an i____ that shows you can think quickly.



Use Context Clues

Write spelling words from the box to complete the paragraph.

Jack Kramer's 14. of the family 15. business is a great opportunity. He realizes the 16. of customer service, so he insists on faithful 17.. Jack's staff appreciates his 18. with their questions and his fairness in evaluating their daily 19.. Kramer Insurance is known for its excellent record, and Jack plans to continue this 20..

attendance
patience
insurance
performance
inheritance
importance
excellence

Proofread a Letter

Proofread the letter below for ten misspelled words. Then rewrite the letter. Write the spelling words correctly and make the corrections indicated by the proofreading marks.

Dear Mr. mKee,

Please make me editor of the school paper. The job as editor will provide a good balanse to the other activities I am in at school. I have experiance as a Writer, and know the importince of meeting deadlines. There has not not been one instence when I have turned in work late. I have a good atendance record, too, with only one day of abcence in two years. I have a lot of pashience when it comes to working with people. plus, I know how important the apearence of the paper is in addition to its content. I will prove my excellance through my job performance.

Sincerely,

Jason Workhard

Proofreading Marks

≡	Make Uppercase
/	Make Lowercase
^	Add
~	Delete
o	Add a Period
¶	Indent

Informative/Explanatory Writing

Write a Letter

Use the writing process to write or type a letter to a potential employer about your job qualifications. Use as many spelling words as you can.

- Follow the form used in the proofreading sample. Use language that is professional and appropriate as you describe your work experience. Be sure your letter has a concluding statement.
- Use complete sentences with correct capitalization, punctuation, grammar, and spelling.
- Use the spell-check function in your word processing program to check your spelling. Remember that an incorrect spelling may match the spelling of another word, and the spell checker can't tell the difference.

Transfer

Think of four more business words that contain the suffixes **-ance** and **-ence**.

Write the words in alphabetical order in your Spelling Journal and circle the suffixes.

Extend & Transfer

Word Study



Word Building

1.

2.

3.

4.

5.

6.

7.

8.

9.

10.

Meaning Mastery

11.

12.

13.

14.

Pattern Power

15.

16.

17.

18.

19.

20.

allowance	attendance	excellence	residence	diligence
audience	importance	obedience	conscience	reluctance
entrance	balance	inheritance	endurance	existence
nuisance	distance	innocence	ignorance	indifference
ordinance	instance	clearance	insistence	
performance	silence	insurance	maintenance	
experience	patience	absence	admittance	
appearance	ambulance	sequence	annoyance	

Word Building

Write the words that are related to these base words. Circle the word that is sometimes confused with **assurance**.

1. obey

5. insure

9. annoy

2. distant

6. heir

10. exist

3. reside

7. maintain

4. silent

8. enter

Meaning Mastery

11. Write the word that comes from the French term **hôpital ambulant**, meaning "mobile field hospital."

12. Write the word that means the opposite of **guilt**.

13. Write the word that has to do with a type of sale.

14. Write the word that can be confused with the word **sequins**.

Pattern Power

15–20. Write the words that do not change spelling when the suffixes **-ance** or **-ence** are added to the base word. If a word has already been used on this page, do not write it again.

Fine Arts



Word Hunt

Read the paragraphs below. Look for the words with the suffixes **-ance** and **-ence**.

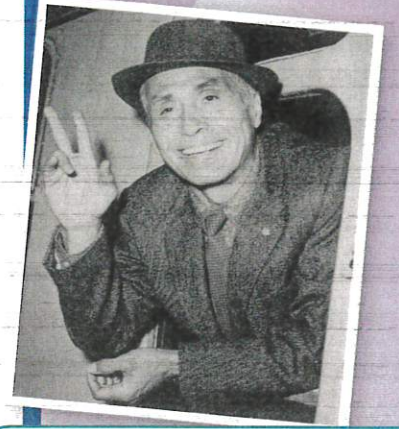
A new type of dance made its appearance in the theater in the late nineteenth century. It became known as modern dance. Its influence was a protest against the strict rules of classic forms of dance—for instance, ballet. Modern dance might use all sorts of movements to express feelings about a personal experience. Ballet uses a set form and limited movements.

One great modern dancer was José Limón. He was born in Mexico in 1908. He took up residence in the U.S. in 1915.

Limón's admittance into art school in the late 1920s was promising, but it left him unhappy. There was no acceptance of students' own styles. So he cut his attendance short.

Soon after, Limón saw a modern dance performance. It was of great significance in his life. He began to study modern dance with Doris Humphrey. She was known for her brilliance in dance. Limón's perseverance for ten years with Humphrey's company paid off. His excellence as a dancer and choreographer led him to start his own dance company in 1940.

Limón became known for the elegance of his dances. Many a dance sequence had a balance between natural gesture and a defined form. The audience must have loved it, because even after Limón died in 1972, his company went on in his absence.



1.

2.

3.

4.

5.

6.

7.

8.

9.

10.

WORD SORT

1–6. Write the three-syllable words with the suffix **-ance**. Draw a line between the syllables.

7–10. Write the three-syllable words with the suffix **-ence**. Draw a line between the syllables. Circle the word that comes from the Latin root **audīre**, meaning “to hear.”